

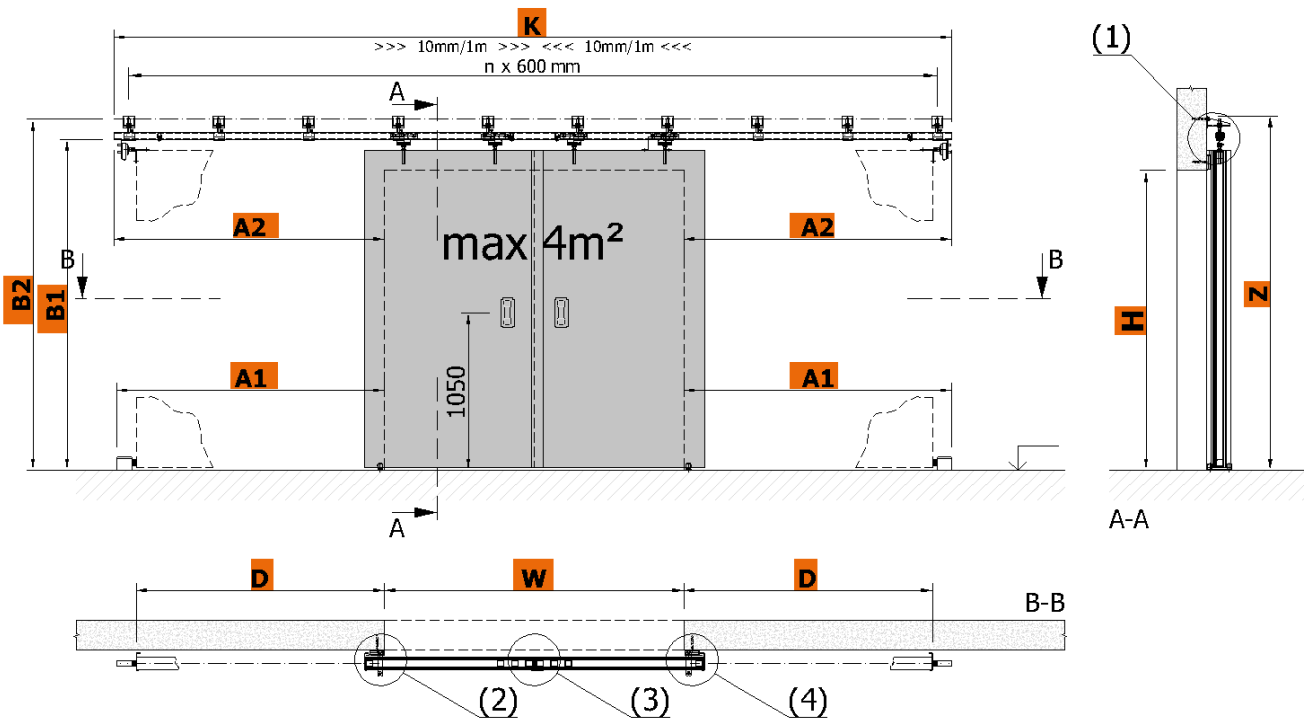


TECHNICAL DATA SHEET DOUBLE LEAF SLIDING FIRE GATES SGS (1+1) EI 120

Technical data sheets serve to determine the basic space requirements of sliding fire gates. Other dimensions or atypical demands can be solved upon request.

SGS (1+1) EI 120

MAGNET



W	opening width [mm]		H	opening height [mm]
D	gate range	= $W/2 + \text{min. } 160 \text{ mm}$		
A1	floor stop	= $D + 130 \text{ mm}$		
A2	overlap from edge of opening	= $D + \text{min. } 130 \text{ mm}$		
K	length of rail	= $W + A1 \text{ mm} + A1 \text{ mm}$		
B1	height of rail from floor	= $H + 205 \text{ mm}$		
B2	axis of fixing system	= $H + 340 \text{ mm}$		
Z	overall height without cover	= $H + 360 \text{ mm}$		

Average weight of gate leaf = 70 kg/m²

